



YOUR Dream OUR Reality...Welcome Home!

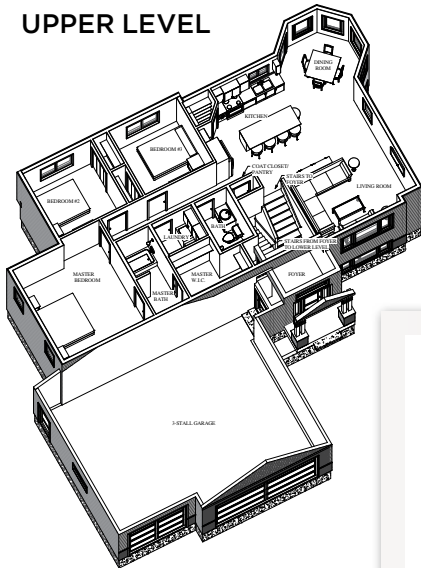


The Dublin

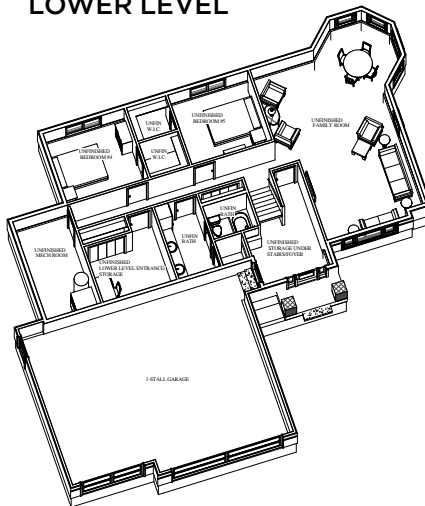
Standard Features Include:

- Up to 3,139 sq. ft. living space
- 1,583 sq. ft. finished
- 9' Ceilings
- Custom built cabinets
- Kitchen island
- Walk-in pantry
- Beveled edge wall corners
- 3 Main floor bedrooms
- Private master bathroom with walk-in closet
- Upper level laundry
- 2 optional bedrooms in basement
- Central Air
- 3 Car garage
- Garage floor drain

UPPER LEVEL



LOWER LEVEL



Get Started Today!
Call **701.277.9797**



The Dublin

STANDARD INTERIOR FEATURES:

- 9' Ceilings on upper level
- 3 Main floor bedrooms
- Private Master Bathroom with fiberglass tub & shower
- Walk-in closet in master bedroom
- Knockdown ceiling texture
- Recessed lighting (5 fixtures)
- Cat 5 & Cable TV wiring
- Brushed nickel plumbing fixtures
- Garbage disposal
- Beveled edge wall corners
- Schlage brushed nickel Georgian style locksets
- Main floor bathroom with 5' fiberglass tub/shower unit
- Central Air
- 92% efficient Gas forced air furnace
- Integrated fresh air ventilation system
- 3 Car garage
- Automatic sewer backup valve
- R19 Insulation on exterior walls
- R50 attic insulation
- Spray foam on exterior rims
- 50 gallon electric water heater

STANDARD EXTERIOR FEATURES:

- Laminated shingles
- 8' Insulated garage door
- White aluminum pillars
- Vinyl sliding windows
- Vinyl siding
- Concrete front step
- Exterior concrete is 4000 psi
- Seamless gutters
- Garage door opener
- Service door in garage
- 4' x 4' concrete slab for garage service door
- Metal soffit and fascia
- Yard to rough grade
- 3 stall garage
- Garage floor drain
- Panel front door with 1 sidelight
- Covered front entry

CABINET FEATURES:

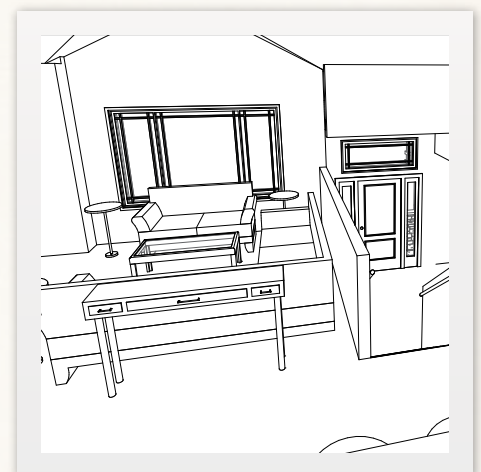
- Custom built cabinets with staggered heights
- Kitchen Island
- Pantry with 5 rollout shelves
- 4 1/4" Mission baseboard
- 2 1/4" Mission Casing
- Flush doors
- Half wall with wood cap around staircase
- Wood extension jambs

LOWER LEVEL:

- Lower level family room, 2 bedrooms, bath and utility room are framed and ready for future expansion



KITCHEN



LIVINGROOM/STAIRWAY

Get Started Today!
Call **701.277.9797**

*Items subject to change without notice