



YOUR Dream OUR Reality...Welcome Home!



The Ashton

Standard Features Include:

- Up to 3,285 sq. ft. livable space
- Approximately 1,654 sq. ft. finished on main floor
- Approximately 1,631 sq. ft. of unfinished living space in basement framed for a family room, 2 bedrooms and bathroom.
- 3 Main floor bedrooms
- Custom walk in tile shower
- Master bedroom walk in closet
- 2 Main floor bathrooms
- 2 optional bedrooms in basement
- Custom designed cabinets
- 9' Ceilings
- Casement windows
- Beveled edge wall corners
- Central Air
- 3 Car garage
- Garage floor drain



Get Started Today!
Call **701.277.9797**



The Ashton

STANDARD INTERIOR FEATURES:

- 9' Ceilings
- 3 Main floor bedrooms
- Knockdown ceiling texture
- Orange peel wall texture
- Beveled edge wall corners
- Recessed lighting package (5 cans see print for placement)
- Cat 5 & Cable TV wiring
- Brushed nickel plumbing fixtures
- Garbage disposal
- Schlage brushed nickel Georgian style locksets
- 2 Main floor bathrooms
- Custom walk in tile shower in master bedroom (see print for details)
- 5' fiberglass tub/shower unit in main bathroom
- Air Conditioning
- 92% efficient Gas forced air furnace
- Fresh air ventilation system
- 3 Car garage
- Garage floor drain
- Automatic sewer backup valve
- R19 Insulation on exterior walls
- R50 attic insulation
- 50 gallon electric water heater

STANDARD EXTERIOR FEATURES:

- 8' Insulated garage door
- 3 square white wood pillars
- Casement windows
- Vinyl siding
- Seamless gutters
- Metal soffit and fascia
- Laminated shingles
- Concrete front step
- Exterior concrete is 4000 psi
- Garage ceiling & walls sheet rocked
- 1 garage door opener
- 2 panel front door
- Front door sidelights
- Service door in garage
- Yard to rough grade (does not include seeding)
- Covered porch

STANDARD WOOD & CABINET FEATURES:

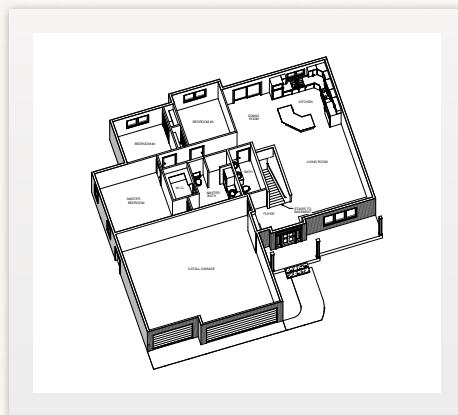
- 4 egress window wells
- Custom designed cabinets
- Stagger height kitchen cabinets
- Kitchen Island
- Pantry & shelving
- Built in linen in master bathroom
- 4 1/4" Mission baseboard
- 2 1/4" Mission Casing
- Oak panel doors
- Half wall with wood cap around staircase
- Wood extension jambs

LOWER LEVEL:

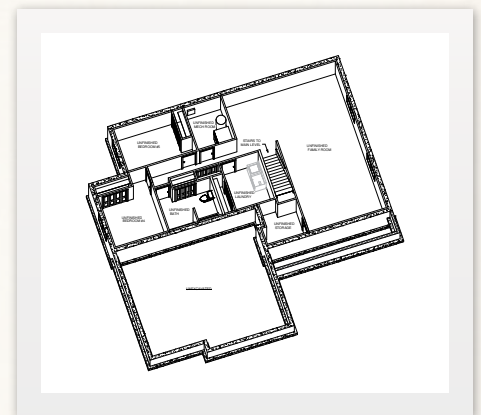
- Lower level family room, 2 bedrooms, bath and utility room are framed and ready for future expansion

STANDARD ALLOWANCES

- Lighting allowance of \$1,000
- Flooring allowance of \$6,660



MAIN LEVEL



BASEMENT

Get Started Today!
Call **701.277.9797**

*Items subject to change without notice