



3-LEVEL SPLIT • THE WINDSOR

YOUR Dream OUR Reality...Welcome Home!



The Windsor

Standard Features Include:

- Total of 3,025 sq. ft.
- 1,753 sq. ft. finished
- 1,272 sq. ft. unfinished
- 2 Main floor bedrooms
- Main floor laundry
- Private 2nd floor master suite
- Custom tile shower in master with fiberglass pan
- Custom designed kitchen & cabinets
- 9' Ceilings
- Beveled edge wall corners
- Central air
- 3 Car garage
- Garage floor drain
- Unfinished lower level framed for family room, 2 bedrooms and bathroom



Get Started Today!
Call **701.277.9797**



The Windsor

STANDARD INTERIOR FEATURES:

- 9' Ceilings
- 2 Main floor bedrooms
- Private 2nd level master suite
- Custom tile shower with fiberglass pan in master bed
- Boxed bay on lower level
- Knockdown ceiling texture
- Orange peel wall texture
- Swinging glass patio door
- Recessed lighting package (5 cans see print for placement)
- Cat 5 & Cable TV wiring
- Brushed nickel plumbing fixtures
- Garbage disposal
- Beveled edge wall corners
- Schlage brushed nickel Georgian style locksets
- 5' fiberglass tub/shower in main bathroom
- Central air
- 92% efficient Gas forced air furnace
- Integrated humidity control system
- Automatic sewer backup valve
- R19 Insulation on exterior walls
- R50 attic insulation
- Spray foam sealing & insulation on exterior rim of entire house
- 50 gallon electric water heater

STANDARD EXTERIOR FEATURES:

- 3 Car garage
- Garage floor drain
- Laminated shingles
- 8' Insulated garage door
- 2 white aluminum square pillars
- Vinyl sliding windows
- Vinyl siding
- Concrete front step
- Exterior concrete is 4000 psi
- Garage is sheet rocked & insulated
- Seamless gutters
- 1 garage door opener
- Service door in garage
- Metal soffit and fascia
- Yard to rough grade
- 2 panel steel front door
- Covered porch
- Double front door sidelights

STANDARD WOOD & CABINET FEATURES:

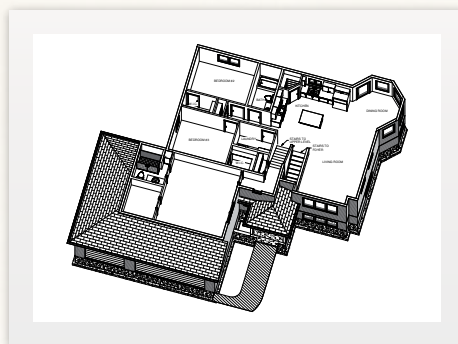
- Custom designed & built poplar cabinets
- Stagger height kitchen cabinets
- Kitchen Island
- Walk in pantry & shelving
- Built in linen in master bathroom
- 4 1/4" Mission baseboard
- 2 1/4" Mission Casing
- Poplar flush doors
- Wood extension jambs
- Half wall with wood cap around staircase

STANDARD ALLOWANCES

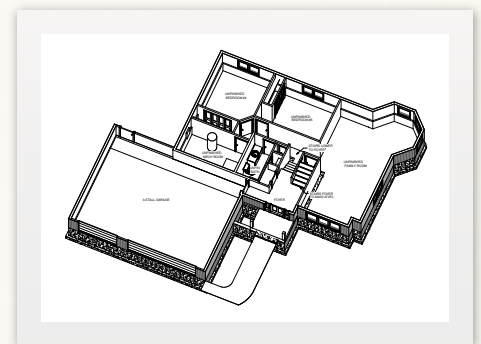
- Lighting allowance of \$1,000.00
- Flooring allowance of \$7,116

LOWER LEVEL

- Lower level family room, 2 bedrooms, bathroom and utility room are framed and ready for future expansion



UPPER LEVELS



BASEMENT

Get Started Today!
Call **701.277.9797**

*Items subject to change without notice