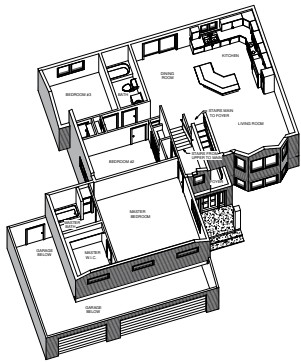
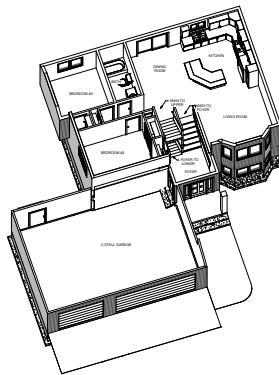




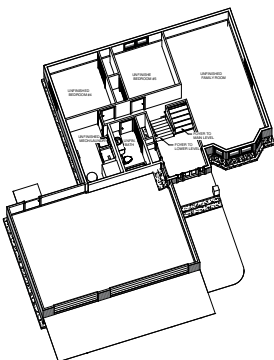
YOUR **Dream** OUR **Reality**...*Welcome Home!*



**SECOND
LEVEL**



**MAIN
LEVEL**



BASEMENT

The Nottingham Standard Features Include:

- Up to 2,578 sq. ft. of living space
- 1,540 sq. ft. finished
- Custom designed oak cabinets
- Kitchen Island
- Linen closet in master bathroom
- 9' Ceilings
- 3 bedrooms finished
- Unfinished lower level framed for living room, 2 bedrooms and bathroom.
- Private 2nd level master suite
- Central Air
- 3 Car garage
- Garage floor drain

Get Started Today!
Call 701.277.9797



The Nottingham

STANDARD INTERIOR FEATURES:

- 9' Ceilings
- 3 bedrooms finished
- Private 2nd level master suite
- Knockdown ceiling texture
- Orange peel wall texture
- Recessed lighting
- Cat 5 & Cable TV wiring
- Brushed nickel plumbing fixtures
- Garbage disposal
- Beveled wall corners
- Brushed nickel locksets
- 5' tub/shower units in bathrooms
- Central Air
- 92% efficient Gas forced air furnace
- Integrated humidity control system
- R19 Insulation on exterior walls
- R50 attic insulation
- Spray foam sealing & insulation on exterior rim of entire house
- 50 gallon electric water heater
- Sliding glass patio door
- Automatic sewer backup valve

STANDARD EXTERIOR FEATURES:

- 3 Car garage
- Laminated shingles
- 8' Insulated garage door
- Vinyl sliding windows
- Vinyl siding
- Concrete front step
- Exterior concrete is 4000 psi
- Garage ceiling & walls sheet rocked
- Seamless gutters
- 1 garage door opener
- Service door in garage
- Metal soffit and fascia
- Yard to rough grade
- 6 panel steel front door
- Covered porch
- 1 Front door sidelight

CABINET FEATURES:

- Custom designed oak cabinets
- Kitchen Island
- Linen closet in master bathroom
- Half wall with wood cap around staircase
- Wood extension jambs
- 4 1/4" Mission baseboard
- 2 1/4" Mission Casing
- Flush doors

LOWER LEVEL:

- Lower level family room, 2 bedrooms, bathroom and utility room are framed ready for future expansion



KITCHEN

Get Started Today!
Call **701.277.9797**

*Items subject to change without notice