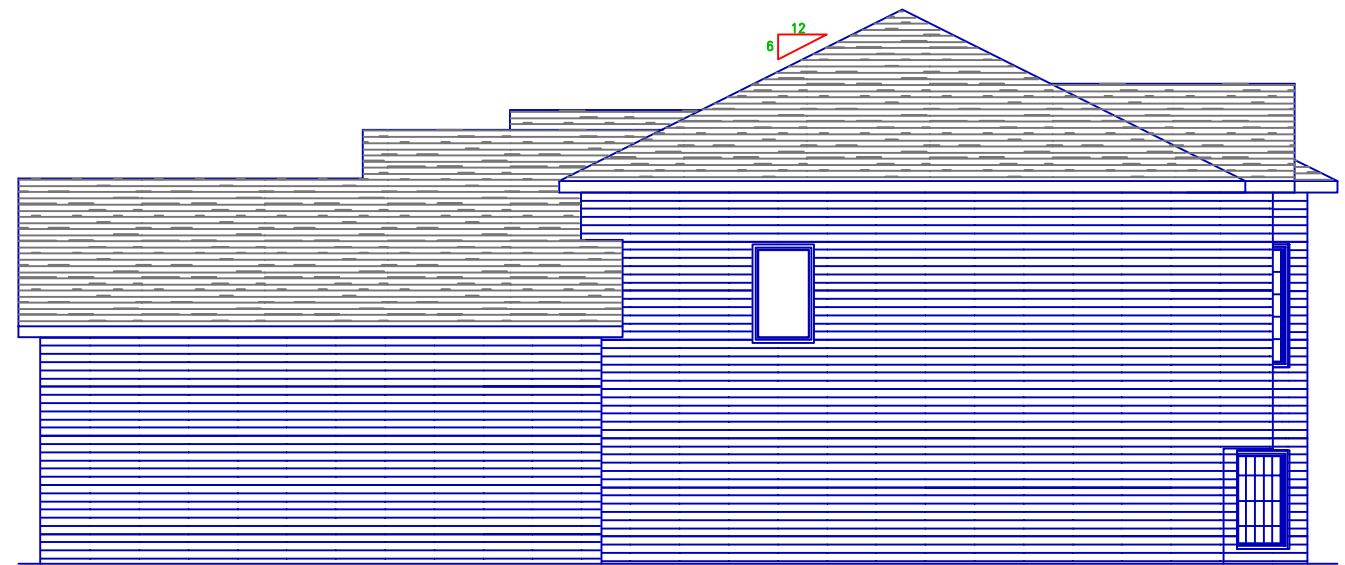




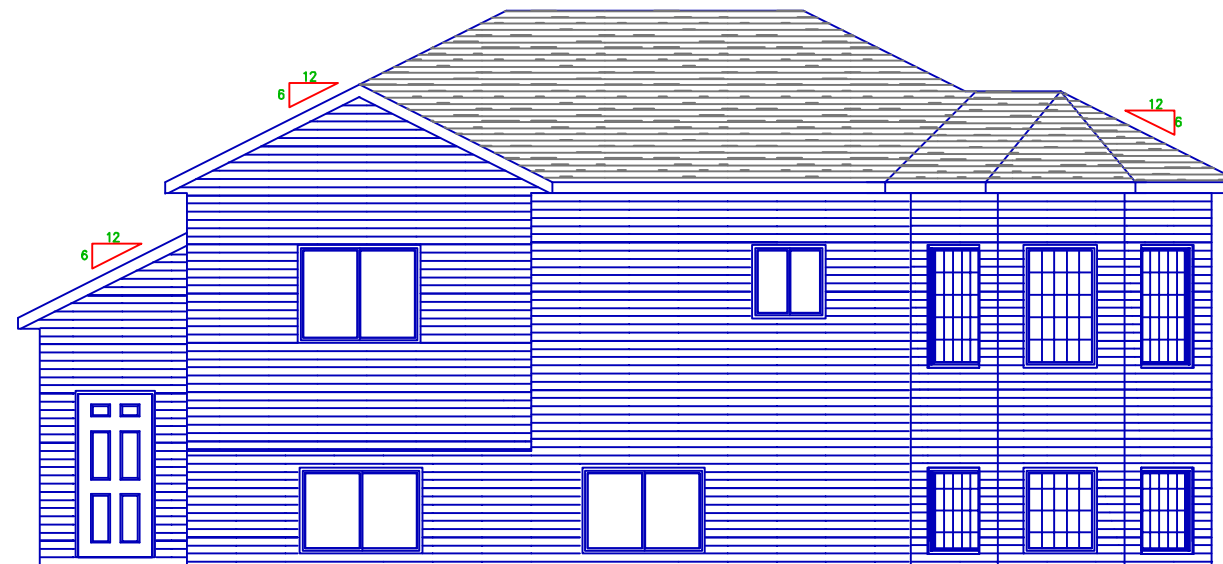
FRONT ELEVATION
SCALE: 1/4" = 1'-0"



LEFT ELEVATION
SCALE: 1/4" = 1'-0"



RIGHT ELEVATION
SCALE: 1/4" = 1'-0"



REAR ELEVATION
SCALE: 1/4" = 1'-0"

DISCLAIMER OF WARRANTIES
PLANS FURNISHED BY RIVERSIDE WERE PREPARED BY DRAFTSMEN WHO ARE NOT QUALIFIED AS PROFESSIONAL ARCHITECTS OR ENGINEERS. RIVERSIDE EXPRESSLY DISCLAIMS ANY LIABILITY FOR ERRORS ON THESE PLANS. USE OF SUCH PLANS ARE AT THE SOLE RISK OF THE USER AND ARE FURNISHED WITHOUT ANY WARRANTY. RESPONSIBILITY FOR THE USAGE OF CORRECT STRUCTURAL MATERIALS, SPANS, LOAD BEARING AND CONSTRUCTION METHODS ARE THE RESPONSIBILITY OF THE BUILDER, OWNER, OR THE USER OF THESE PLANS.

ELEVATIONS

RHR CONSTRUCTION

STERLING 2 STALL
SCALE: 1/4" = 1'-0"
DATE: 3-4-2008

SQ. FOOTAGE:
SEE PLANS

DRAWN BY:
D.M.M.

RIVERSIDE BUILDING CENTER
1015 S Main Ave.
Lisbon, ND 58054
(701)683-4472 or 800-499-4472
BUILDING FOR A BETTER TOMORROW

SHEET:
#1
OF 3